



# Paladin

PALADIN, INC.

## Annual Report FYE 2021

A 501c3 charitable organization dedicated to advocating for persons with disabilities to ensure a meaningful life.



### OUR REACH

**68** Administrative Staff

**218** Direct Care Staff

**595** Consumers



Consumers  
Employed in  
Supported  
Programs

**79**



### BOARD OF DIRECTORS

Lauren Arnold

Mike Breakey

Cheryl Chapman

Carol Connelly

Bill Janes

Gretchen Kalk-Castro

Janice Katz

Fundisani Mangena

Paula Nichols

Sandy Smith

Andie Wolfensohn

*"The staff are very caring and attentive to my daughter's needs. Her participation in Paladin's services and activities has helped with her verbal expression, improved her moods and quality of life and given her purpose." - GeraHan | Guardian*



**1,097,067**

Hours of Service

**79**  
PARTICIPANTS BEING SERVED  
IN OUR SUPPORTED  
EMPLOYMENT PROGRAMS

**44**

Lake County

**35**

La Porte County

### ADULT AND CHILDREN'S SERVICES TOTALS

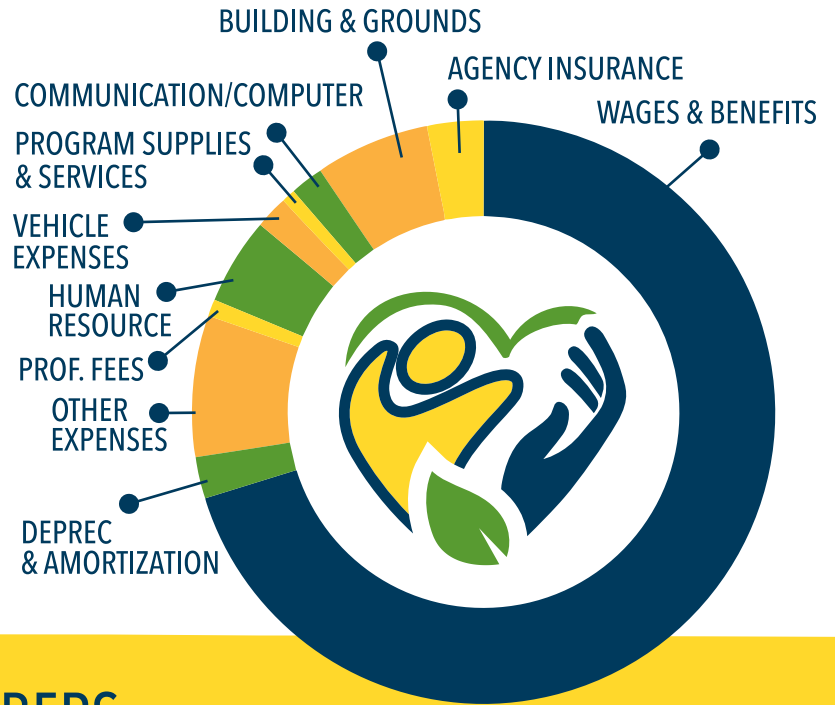
GH/RHS	ADULT SERVICES	36.36%	
DAY SERVICES	ADULT SERVICES	28.03%	
TOTAL ADULT SERVICES	TOTAL ADULT SERVICES	64.39%	64%
CHILDREN'S	CHILDREN (IS/HS)	24.21%	24%
ADMIN	PALADIN A/S	11.40%	12%

## WHAT WE DO

- DAY SERVICES
- TRANSPORTATION
- GROUP HOMES
- RESPIRE
- SUPPORTED LIVING
- BEHAVIORAL SUPPORTS
- COMMUNITY EMPLOYMENT
- COUNCIL ON AGING
- EARLY CHILDHOOD PROGRAMS



## EXPENSES



## EXPENSES BY THE NUMBERS

Wages & Benefits: \$9,553,330	Program Supplies & Services: \$654,013	Other Expenses: \$863,864
Agency Insurance: \$313,084	Vehicle Expenses: \$247,383	Deprec. & Amortization: \$423,218
Building & Grounds: \$1,043,273	Human Resource Expense: \$103,936	Total Expenses: \$13,579,112
Communication/Computer: \$125,865	Prof. Fees/Services: \$251,145	

## REVENUE

FEEs FOR SERVICE: \$8,084,055

GRANTS: \$2,674,528

COVID FUNDING: \$2,397,855

CONTRIBUTIONS: \$630,238

OTHER: \$65,268

SALES, NON GOVT.: \$850,758

## PHILANTHROPIC PARTNERS



- Healthcare Foundation of La Porte
- Crown Point Community Foundation
- Michigan City Community Enrichment Corporation
- Legacy Foundation
- Unity Foundation
- St. Andrews
- UW of Greater LaPorte County
- Horizon Cares
- St. Anthony Franciscan
- Title III Real Services
- Early Learning "Come Back Stronger"